

Courtesy Of Jason Paul Of MaxWell Progressive

## **\$219,900 - # 325 10511 42 Avenue Nw, Edmonton**

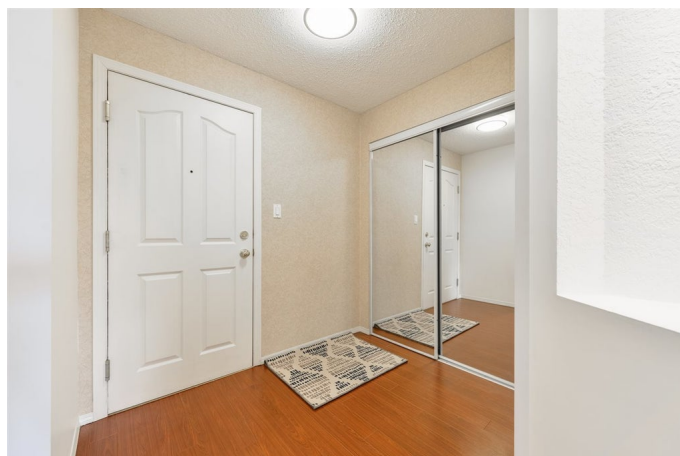
MLS® #E4236953

### **\$219,900**

2 Bedroom, 2.00 Bathroom, 1,044 sqft  
Condo / Townhouse on 0 Acres

Rideau Park\_EDMO, Edmonton, AB

Recently renovated and move in ready! This spacious 2 bedroom, 2 bathroom condo sits in a prime location in Rideau Park! Close to schools, shopping, restaurants, QE2, Whitemud, steps to Southgate Mall and LRT, for a quick commute to the U of A and downtown! The kitchen features an abundance of counter space and an island with seating that opens to the living room. The beautiful & bright living room has a lovely gas fireplace, with access to the large covered sunny south balcony. The grand master bedroom offers dual closets and a modern 3 pc ensuite. The 2nd bedroom is large and steps away from the 4 pc bathroom. Enjoy brand new carpet, paint, lighting, and newer stainless steel appliances! You will also appreciate the in-suite laundry with a huge storage/pantry room. Winter will be no match for your heated titled underground parking stall with storage cage. A clean and well managed building with a social/party room and exercise room! A great location and investment, this is the one!



Built in 1998

### **Essential Information**

MLS® #	E4236953
Price	\$219,900
Bedrooms	2

Bathrooms	2.00
Full Baths	2
Square Footage	1,044
Acres	0.02
Year Built	1998
Type	Condo
Sub-Type	Lowrise Apartment
Style	Single Level Apartment
Status	ACTIVE

### Community Information

Address	# 325 10511 42 Avenue Nw
Area	Edmonton
Subdivision	Rideau Park_EDMO
City	Edmonton
County	ALBERTA
Province	AB
Postal Code	T6J 7G8

### Amenities

Features	No Smoking Home, Exercise Room, Laundry-In-Suite, No Animal Home, Parking-Extra, Parking-Visitor, Party Room, Patio, Secured Parking, Security Door, Storage-In-Suite
Parking	Heated, Underground

### Interior

Interior	Carpet, Laminate Flooring, Linoleum
Interior Features	Dishwasher-Built-In, Dryer, Hood Fan, Oven-Microwave, Refrigerator, Stove-Electric, Washer, Window Coverings
Heating	Hot Water
Bedrooms on Main Level	Y
Basement	No Basement, None
Fireplace	Yes
Fireplaces	Gas, Mantel
# of Stories	1

### Exterior

Exterior	Stucco
Exterior Features	Playground Nearby, Shopping Nearby, Landscaped, Park/Reserve,

	Public Transportation, Schools
Roof	Asphalt Shingles
Construction	Wood Frame
Foundation	Concrete

### **School Information**

Elementary	Rideau Park School
Middle	D.S Mackenzie School
High	Harry Ainlay School

### **Additional Information**

Condo Fee        \$465

Listing information last updated on May 11th, 2021 at 2:17pm MDT